

CONTROLS

CONTROL LEVERS

Control lever 400.22

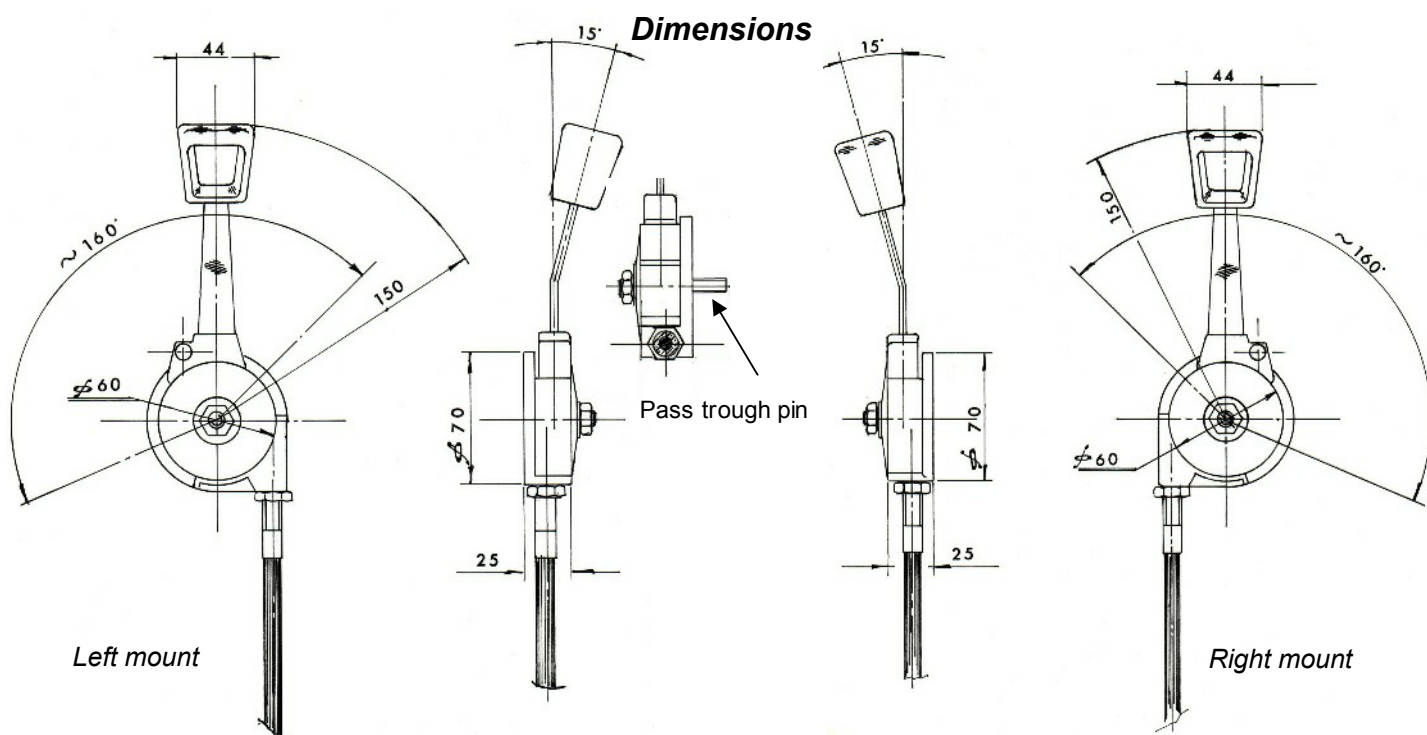
Levers series 400 are simple control system with adjustable clutch, and lateral fixing. They are usually used to command accelerators and stop engine systems. Type 400.2 is connected to cables which works only in traction .



Order codes

Use code 40022 followed by "-" and the number found in the table below

40022	1	Left with bent lever
40022	2	Right with bent lever
40022	3	Left with straight lever
40022	4	Right with straight lever
40022	11	Left with bent lever and pass pin
40022	12	Right with bent lever and pass pin



CONTROLS

CONTROL LEVERS

Series 420, 430, 440

Handcontrol levers of series 400, are levers in die casting compact and efficient for applications with both pull cables and push-pull.

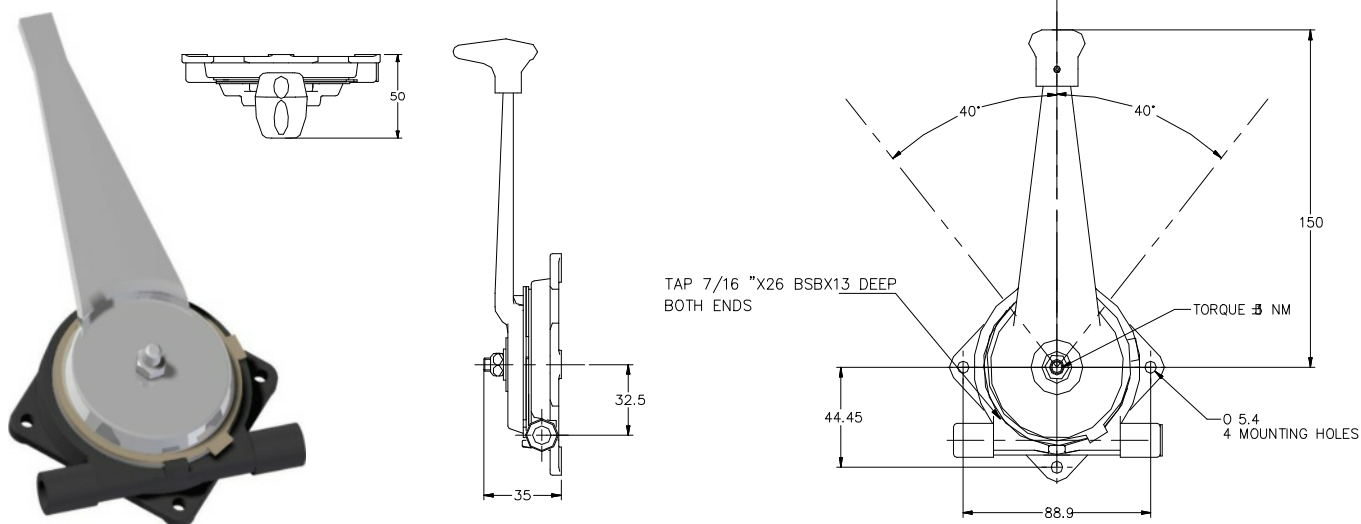
They can operate with a nominal weight of 100 N .

The lever ratio is 5:1 with a maximal stroke of 75mm .

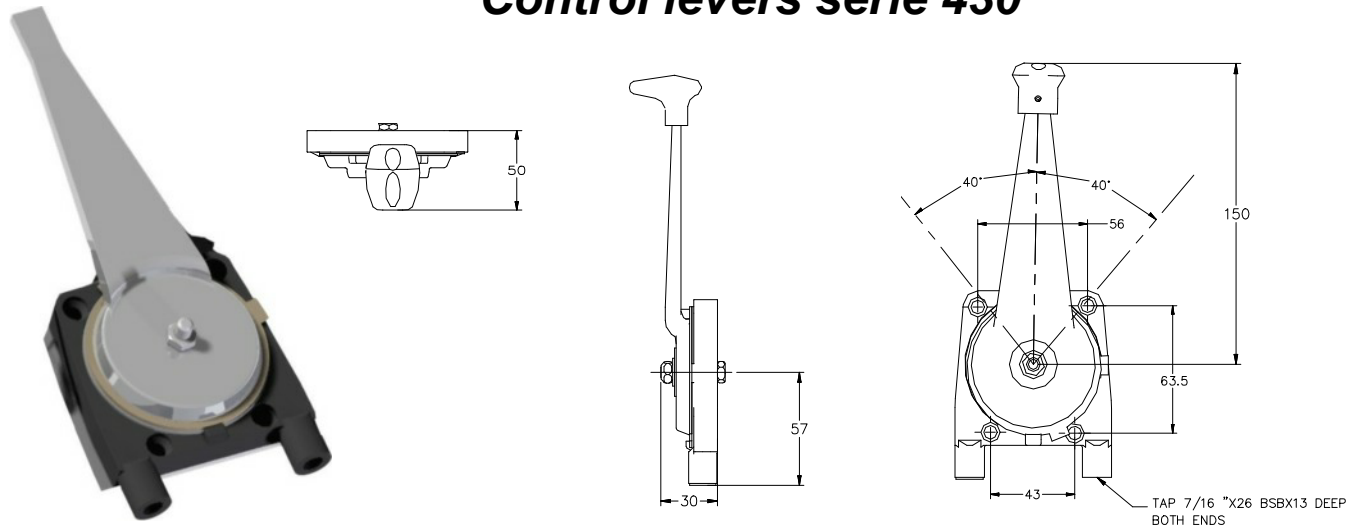
It's possible to add a mechanical lock to stop the stroke in any positions .

Available with adjustable friction , levers of different Length levers, "present man" option etc...

Control levers serie 420



Control levers serie 430



CONTROLS

CONTROL LEVERS

Series 420, 430, 440

Handcontrol levers of series 400, are levers in die casting compact and efficient for applications with both pull cables and push-pull.

They can operate with a nominal weight of 100 N .

The lever ratio is 5:1 with a maximal stroke of 75mm .

It's possible to add a mechanical lock to stop the stroke in any positions .

Available with adjustable friction , levers of different Length levers, "present man" option etc...

Control levers serie 440

